

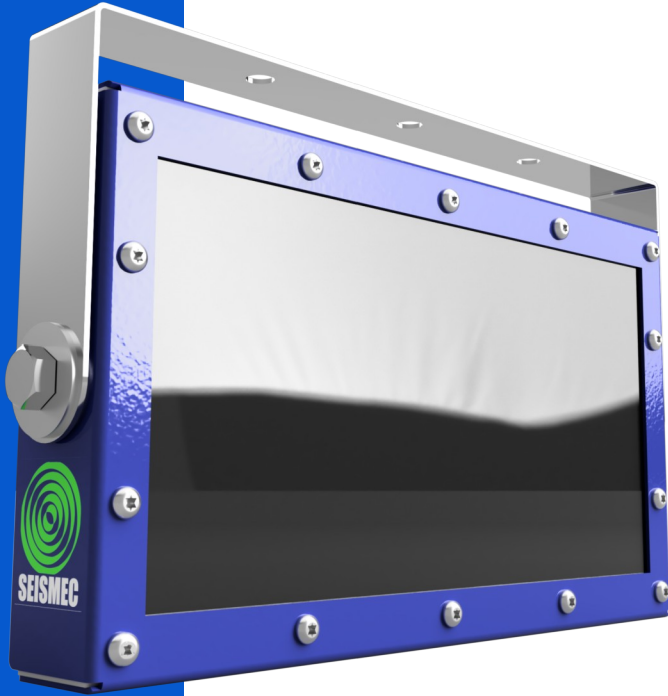
Industrial Smart Display

Daylight Readable Industrial Display designed for Harsh Environments

Using an internal SEISMEC Message decoder and Display Controller the display can easily Display multiple lines of data or use the whole area as a single line.

Options for Bar Graphs as well as Text allow the Display to easily Convey Data the Operators need.

Communication Options including Radio and Serial Data.



Features:

- DayLight LED Based Display
- Programmable Timeout if no Updates Received
- 400X200mm Display Area
- Up to Three Line of Data
- VESA Mount or Hanging Mount
- Simple Graphics Such as Bar Displays
- Communication Options RS485,RS232, Radio or Ethernet
- Power Option 24Vdc

Separate Software for Message Translation available so end users can customize system to run with their equipment.

Display Onboard Message Receiver can be Customized to work with most Industrial message formats.

Product Part Numbers

01-09-4001 RTSS Industrial Smart Display

sales@seismec.com

www.seismec.com

SEISMEC Marine is a Global Company focused on Exploration Technology, Vessel Conversions and New builds, Engineering Services, Marine Finance and Quality Offshore Personnel.